

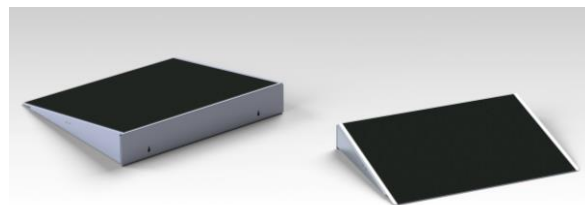
doorline-threshold wedge™

Instructions for use

Product codes: DTW1.5, DTW2, DTW3, DTW4, DTW5, DTW6

Key Points

- New unique robust design
- Suitable for outdoor and indoor use



Intended Purpose: These ramps are intended to be used as a wheelchair accessory for persons with disabilities to navigate areas of different heights.

Before use

- Remove and retain all packaging
- Ensure the ramps have not been damaged in transit or storage.
- Carefully read the instructions and warning texts before using ramps. Keep instructions for reference.
- Ensure the surface is firm, stable and able to bear the intended load.
- The capacity of the ramp is 350kg (771lbs). This applies for mobility devices and/or passenger/attendant
- Gloves must be worn during deployment due to the risk of sharp edges on the ramp

To Deploy

1. Position the ramp so the widest edge sits against the threshold.
2. The ramp can be easily fixed in place by using the keyholes that can be used to locate the ramp from correctly spaced screws in the threshold
3. If not fixing the ramp, ensure the ramp does not become dislodged in use. Check the ramp is firmly located, and stable each time it is used. Take care when using the ramp, so that no part of the wheelchair catches and moves it.

Maintenance

- If the ramp becomes damaged or slippery in any way it should not be used (contact supplier/manufacturer).
- The ramp may be cleaned with normal cleaning products and left to dry before use.
- Maximum recommended cleaning temperature 50°C, please enquire for further details on use with industrial cleaning machines

Recycling

- For disposal of this product, please liaise with a metals recycling contractor
- All the materials in the ramps are 100% recyclable. Detach all rubber detail and send the aluminium parts to metal recycling.

doorline-threshold wedge™

Instructions for use

Product codes: DTW1.5, DTW2, DTW3, DTW4, DTW5, DTW6

Warranty

- The ramp carries a comprehensive 2-year warranty for normal use; conditions apply.
- Use other than published/intended will void the warranty.
- Any modification/repair other than by manufacturer will void the warranty.



Doorline-threshold wedge

Key Product Information

Code	Height	Length	Width	Capacity kg (lbs)*	Weight kg (lbs)
DTW1.5	1.5in (4cm)	20cm (7.8ins)	74cm (29ins)	350kg (771)	1.7kg (3.7)
DTW2	2ins (5cm)	27cm (10.6ins)	74cm (29ins)	350kg (771)	2.3kg (5)
DTW3	3ins (7.5cm)	40cm (15.7ins)	74cm (29ins)	350kg (771)	4.5kg (10)
DTW4	4ins (10cm)	50cm (19.7ins)	74cm (29ins)	350kg (771)	5.5kg (12)
DTW5	5ins (12.5cm)	70cm (27.5ins)	74cm (29ins)	350kg (771)	7.5kg (16.5)
DTW6	6ins (15cm)	90cm (35.4ins)	74cm (29ins)	350kg (771)	9.2kg (20)