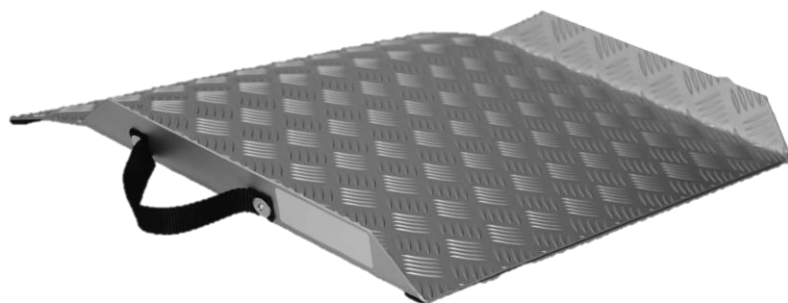


# Metro™

Mobility Products



## Instructions for use

Product codes: MMT5

**Intended Purpose:** These ramps are intended to be used as a wheelchair accessory for persons with disabilities to navigate areas of different heights.

### Before use

- Remove and retain all packaging
- Ensure the ramps have not been damaged in transit or storage.
- Carefully read the instructions and warning texts before using ramps. Keep instructions for reference.
- Ensure the surface at both levels is firm, stable and able to bear the intended load.
- The capacity of the ramp is 300kg (661lbs) assuming the ramp rests on the threshold.

### To Deploy

1. Position the ramp to bridge over the threshold (pic 1).
2. Ensure the ramps do not become dislodged in use. Check ramps are firmly located, and stable each time they are used. Take care when using the ramps, so that no part of the wheelchair catches and moves the ramps.

### Maintenance

- If the ramps become damaged or slippery in any way they should not be used (contact supplier/manufacturer).
- The ramps may be cleaned with normal cleaning products and left to dry before use.
- Maximum recommended cleaning temperature 50°C, please enquire for further details on use with industrial cleaning machines

### Recycling





- For disposal of this products, please liaise with a metals recycling contractor
- All the materials in the ramps are 100% recyclable. Detach all rubber detail and send the aluminium parts to metal recycling.

### Warranty

- The ramps carry a comprehensive 2 year warranty for normal use, conditions apply.
- Use other than published/intended will void the warranty.
- The ramps are not designed for permanent outside use and must not be fixed down.
- Any modification/repair other than by manufacturer will void the warranty.

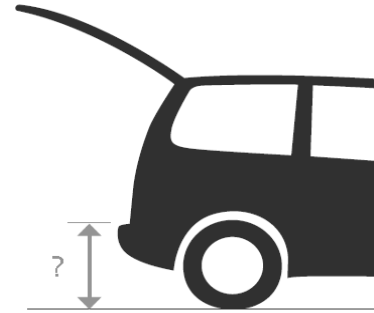
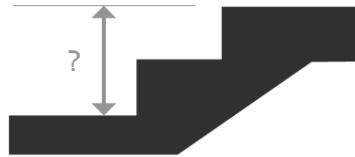


## Gradient/Slope

<b>1:6 (10°)</b>		Acceptable in some cases for assisted access and powered wheelchairs.
<b>1:8 (8°)</b>		A good balance between gradient and space use, suited for events etc.
<b>1:12 (5°)</b>		Often required by social services/local authorities. Minimum required Building Regs Doc M for installed ramps.
<b>1:15 (4°)</b>		Sometimes required by social services/local authorities for independent access.

## Ramp Length

- a. Measure the step height / level difference.  
(Total height of steps or height to resting point on vehicle).



- b. Use the Ramp Length Guide to decide which length you need.

### Ramp Length Guide

Step height/level difference (up to)	Length at 1:6	Length at 1:8	Length at 1:12
10cm (4")	60cm (2')	80cm (2' 7")	120cm (3' 11")
15cm (6")	90cm (2' 11")	120cm (3' 11")	180cm (5' 11")
20cm (8")	120cm (3' 11")	160cm (5' 3")	240cm (7' 10")
25cm (10")	150cm (4' 11")	200cm (6' 7")	300cm (9' 10")
30cm (1')	180cm (5' 11")	240cm (7' 10")	360cm (11' 10")
45cm (1' 6")	270cm (8' 10")	360cm (11' 10")	540cm (17' 9")
60cm (2')	360cm (11' 10")	480cm (15' 9")	720cm (23' 7")